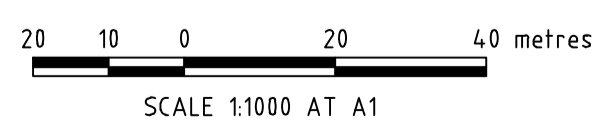
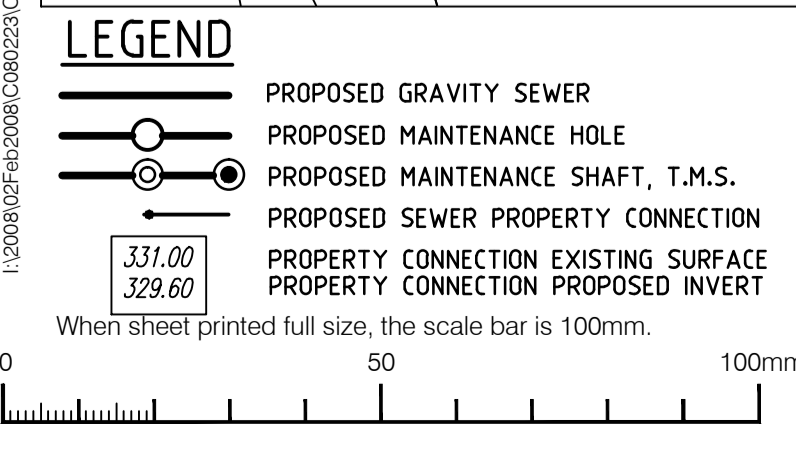


NOTES

1. ALL DRAWINGS TO BE READ IN CONJUNCTION WITH THE SPECIFICATION
2. EXACT LOCATION OF PROPOSED GRAVITY DRAINS AND PUMPING MAINS ARE TO BE CONFIRMED ON SITE WITH THE SUPERINTENDENT FOLLOWING THE LOCATION OF EXISTING SERVICES.
3. CONTRACTOR TO SET OUT AND CONFIRM PROPERTY CONNECTIONS WITH SUPERINTENDENT PRIOR TO CONSTRUCTION IN ACCORDANCE WITH THE TIME CONSTRAINTS NOMINATED IN THE SPECIFICATION.
4. CADASTRE BOUNDARIES SHOWN SERVE AS A REFERENCE ONLY AND MAY NOT BE ACCURATE.
5. SETOUT DIMENSIONS SHOWN ARE FROM CADASTRE BOUNDARIES, NOT FENCES.
6. ALL EXISTING SERVICES TO BE LOCATED AND DEPETHED PRIOR TO CONSTRUCTION.
7. EASEMENT AGREEMENTS ARE STILL TO BE FINALISED. SOME CONDITIONS OF ACCESS MAY CHANGE. FINAL NEGOTIATIONS WILL REQUIRE INPUT FROM THE PREFERRED CONTRACTOR.



DISTRICT COUNCIL OF MOUNT REMARKABLE
 5 MAIN NORTH ROAD
 MELROSE
 Ph. (08) 8666 2014
 Facs. (08) 8666 2169

TENDER ISSUE
NOT FOR CONSTRUCTION

REV.	DATE	DESCRIPTION	DRAFT	ENG.	CHKD
A	13.03.2012	PRELIMINARY ISSUE	JPF	AC	NS
B	29.05.2015	FOR REVIEW ISSUE	JPF	LC	NS
C	09.06.2015	TENDER ISSUE	CJH	LC	NS

W&G
 WALLBRIDGE & GILBERT
 Consulting Engineers
 60 Wyatt Street Adelaide South Australia 5000
 Telephone (08) 8223 7433 Facsimile (08) 8232 0967
 Email adelaida@weng.com
 W&G Engineers Pty Ltd ACN 052 528 926
 trading as Wallbridge & Gilbert

WIRABARA CWMS
 DISTRICT COUNCIL OF MOUNT REMARKABLE
 WIRABARA, SOUTH AUSTRALIA
SEWER LAYOUT - 3 OF 4

A1 DRAWING NUMBER
 Job Number Sheet No. Rev.
 Design Drawn
 LC JPF
C080223 C03 C

1:200801025-010000-C080223-C03-000-C-08/2015 10:39 AM L. charlton