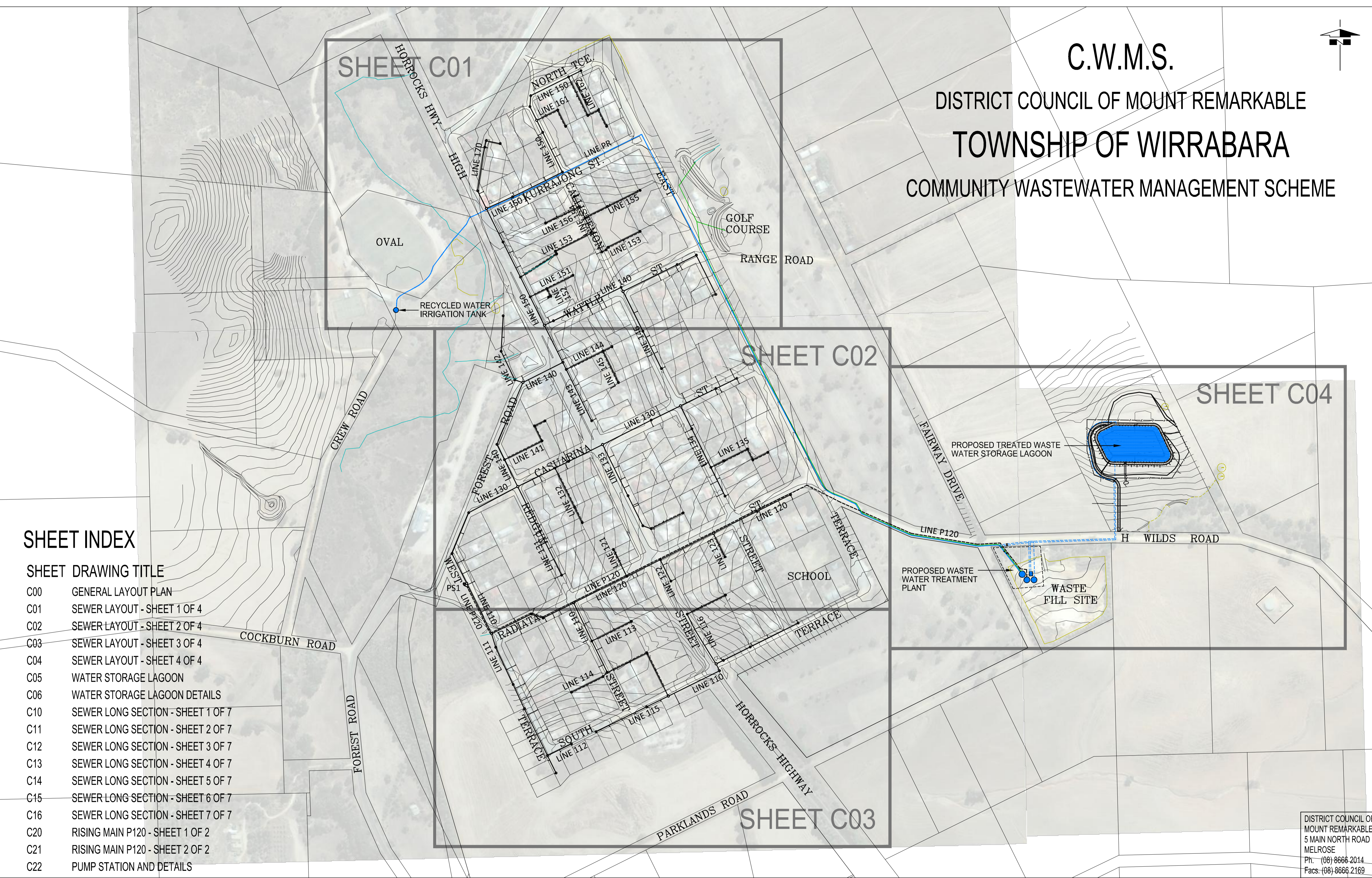


C.W.M.S.  
 DISTRICT COUNCIL OF MOUNT REMARKABLE  
**TOWNSHIP OF WIRRABARA**  
 COMMUNITY WASTEWATER MANAGEMENT SCHEME



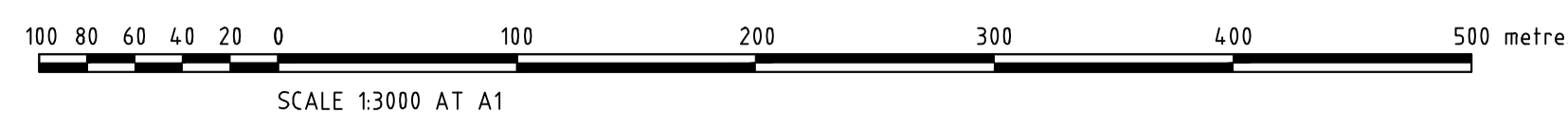
**SHEET INDEX**

**SHEET DRAWING TITLE**

- C00 GENERAL LAYOUT PLAN
- C01 SEWER LAYOUT - SHEET 1 OF 4
- C02 SEWER LAYOUT - SHEET 2 OF 4
- C03 SEWER LAYOUT - SHEET 3 OF 4
- C04 SEWER LAYOUT - SHEET 4 OF 4
- C05 WATER STORAGE LAGOON
- C06 WATER STORAGE LAGOON DETAILS
- C10 SEWER LONG SECTION - SHEET 1 OF 7
- C11 SEWER LONG SECTION - SHEET 2 OF 7
- C12 SEWER LONG SECTION - SHEET 3 OF 7
- C13 SEWER LONG SECTION - SHEET 4 OF 7
- C14 SEWER LONG SECTION - SHEET 5 OF 7
- C15 SEWER LONG SECTION - SHEET 6 OF 7
- C16 SEWER LONG SECTION - SHEET 7 OF 7
- C20 RISING MAIN P120 - SHEET 1 OF 2
- C21 RISING MAIN P120 - SHEET 2 OF 2
- C22 PUMP STATION AND DETAILS

**LEGEND**

- PROPOSED GRAVITY SEWER DRAIN
- EXISTING RECYCLED WATER RISING MAIN
- - - PROPOSED SEWAGE RISING MAIN
- EXISTING STORMWATER RISING MAIN
- PS1 PROPOSED SEWAGE PUMPING STATION
- EXISTING WATER COURSE
- - - PROPOSED RECYCLED WATER RISING MAIN



OVERALL CONTOURS: CONTOUR INTERVAL APPROX. 1 metre  
 (OVERALL CONTOURS INDICATE GENERAL TOPOGRAPHY ONLY  
 AND ARE NOT ACCURATE)

TENDER ISSUE  
NOT FOR CONSTRUCTION

REV.	DATE	DESCRIPTION	DRAFT	ENG.	CHKD
A	13.03.2012	PRELIMINARY ISSUE	JPF	AC	NS
B	29.05.2015	FOR REVIEW ISSUE	JPF	LC	NS
C	09.06.2015	TENDER ISSUE	CJH	LC	NS



**W&G**  
 WALLBRIDGE & GILBERT  
 Consulting Engineers  
 60 Wyatt Street Adelaide South Australia 5000  
 Telephone (08) 8223 7433 Facsimile (08) 8232 0967  
 Email adelaide@wngeng.com  
 W&G Engineers Pty Ltd ACN 052 528 926  
 trading as Wallbridge & Gilbert

**WIRRABARA CWMS**  
 DISTRICT COUNCIL OF MOUNT REMARKABLE  
 WIRRABARA, SOUTH AUSTRALIA  
**GENERAL LAYOUT PLAN**

<b>A1</b>	<b>DRAWING NUMBER</b>
Design LC	Sheet No. <b>C080223 C00 C</b> Rev.

DISTRICT COUNCIL OF  
 MOUNT REMARKABLE  
 5 MAIN NORTH ROAD  
 MELROSE  
 Ph: (08) 8666 2014  
 Facs: (08) 8666 2169

I:\2008\CF\0208\C080223\_C00.dwg, C: 9/8/2015 10:25 AM, thambin