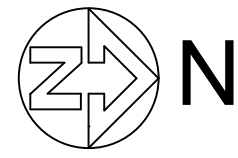
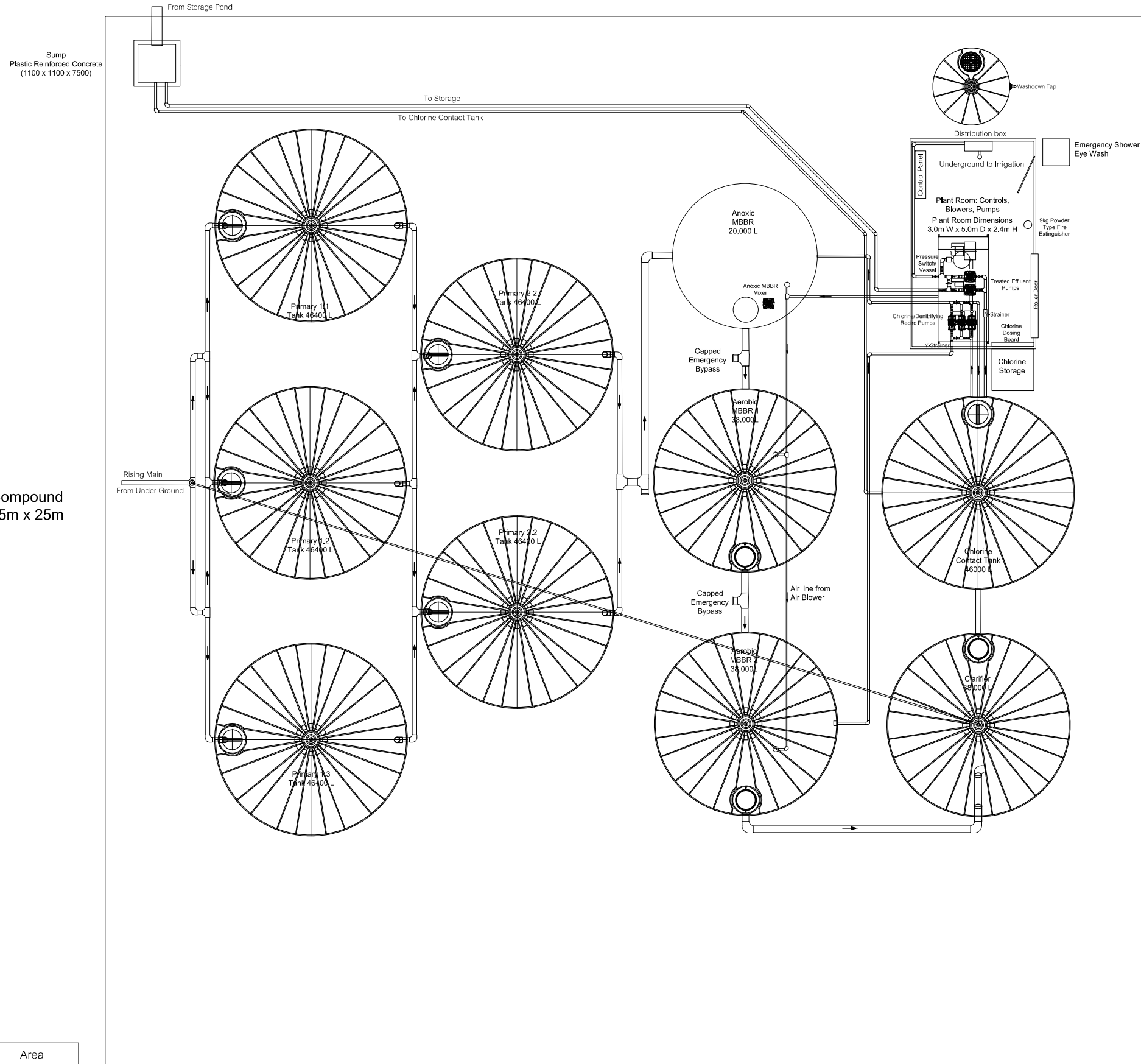


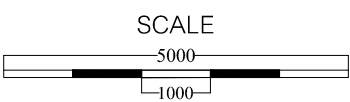


Compound  
25m x 25m



- Note :
- 1) PAD 98% compacted sub-base, 150mm minimum thickness compacted hardstand. Topped with 100mm thick compacted dolomite. Compaction tests to minimum 98% compaction. Top level of pad approx. 150mm above normal ground level.
  - 2) 3 units of Air Blower located on top of pump skids.

Tank	Diameter	Area
Primary 1.1,1.2,1.3	4.6m	16.62m2
Primary 2.1,2.2	4.6m	16.62m2
Anoxic MBBR	3.45m	9.35m2
Aerobic MBBR 1	4.37m	15.00m2
Aerobic MBBR 2	4.37m	15.00m2
Clarifier	4.37m	15.00m2
Chlorine Contact	4.6m	16.62m2
Sump	1.1 x 1.1m	1.21m2

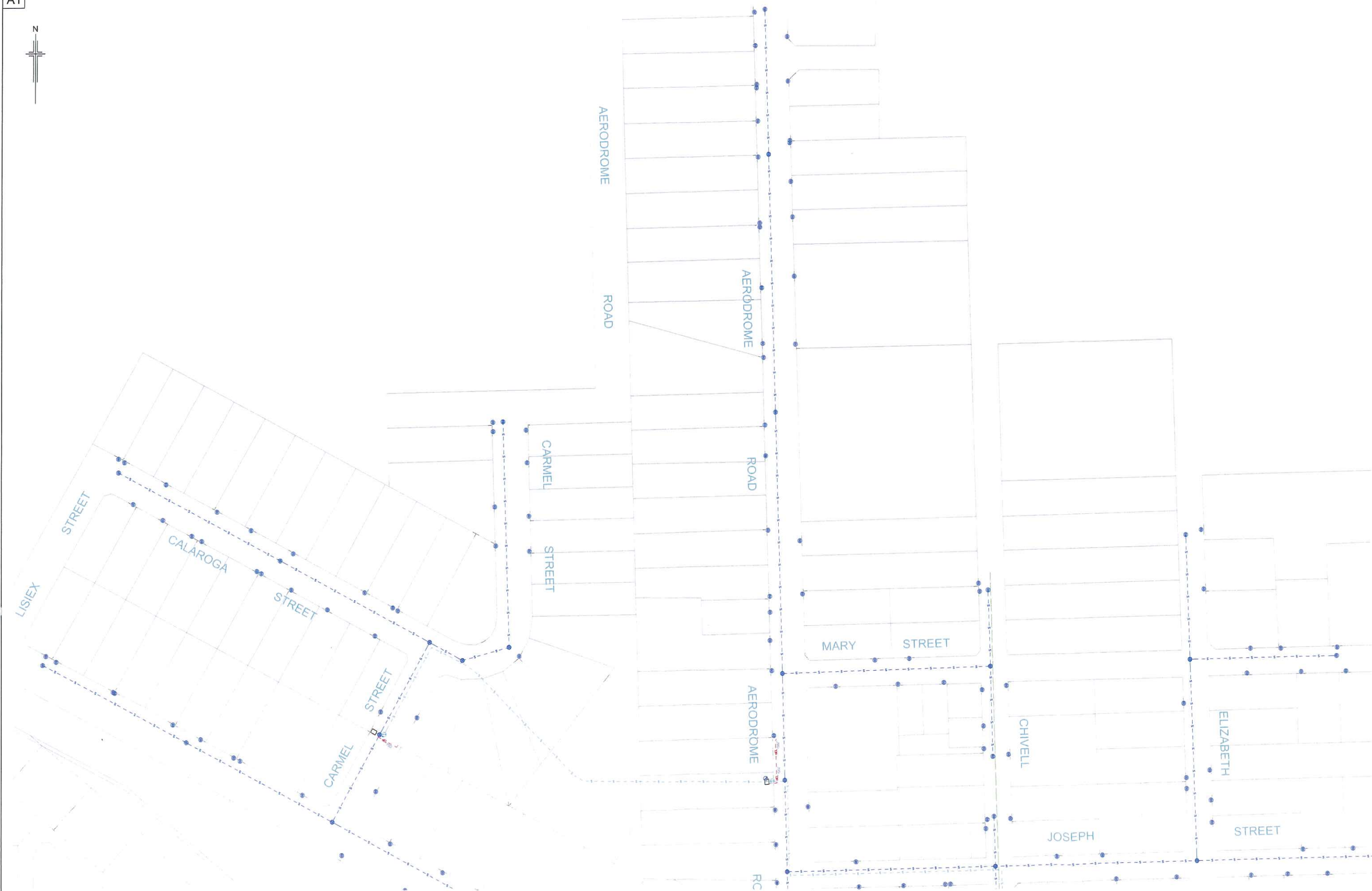


GO TREAT MBBR 2.38-2-180 Plan		GO TREAT MBBR - MALLALA CWMS			
Date: 11 December 2014		SIZE	FECDM NO.	DWS NO.	REV
		SCALE	NTS	AS BUILT	SHEET 1 of 1

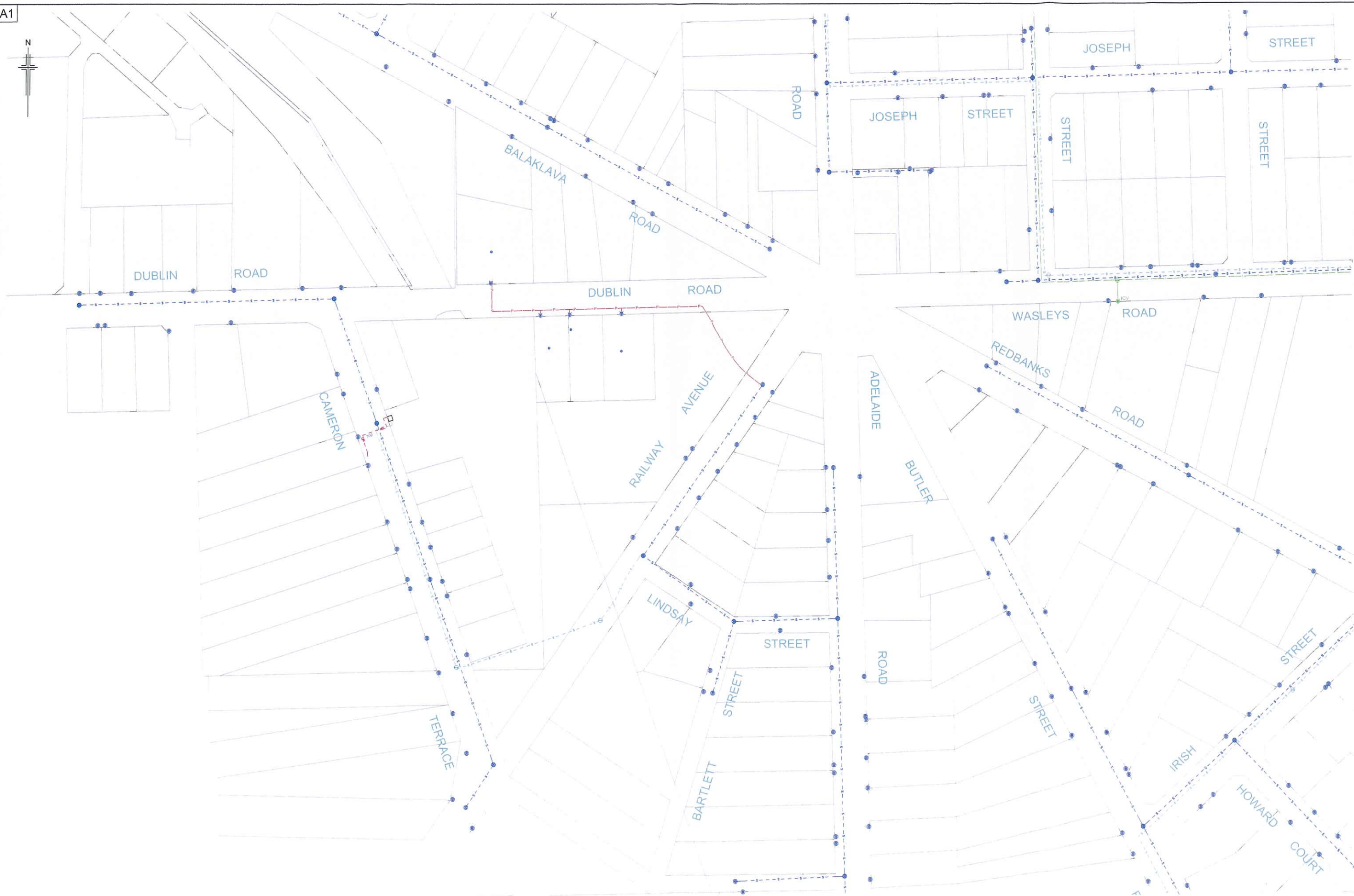
Environmental Water Services (EWS)  
9 Light Crescent, Mount Barker, SA, 5251  
Tel : 08 8398 4044 Fax : 08 8398 4066  
Web : www.goews.com.au

120314 001  
11

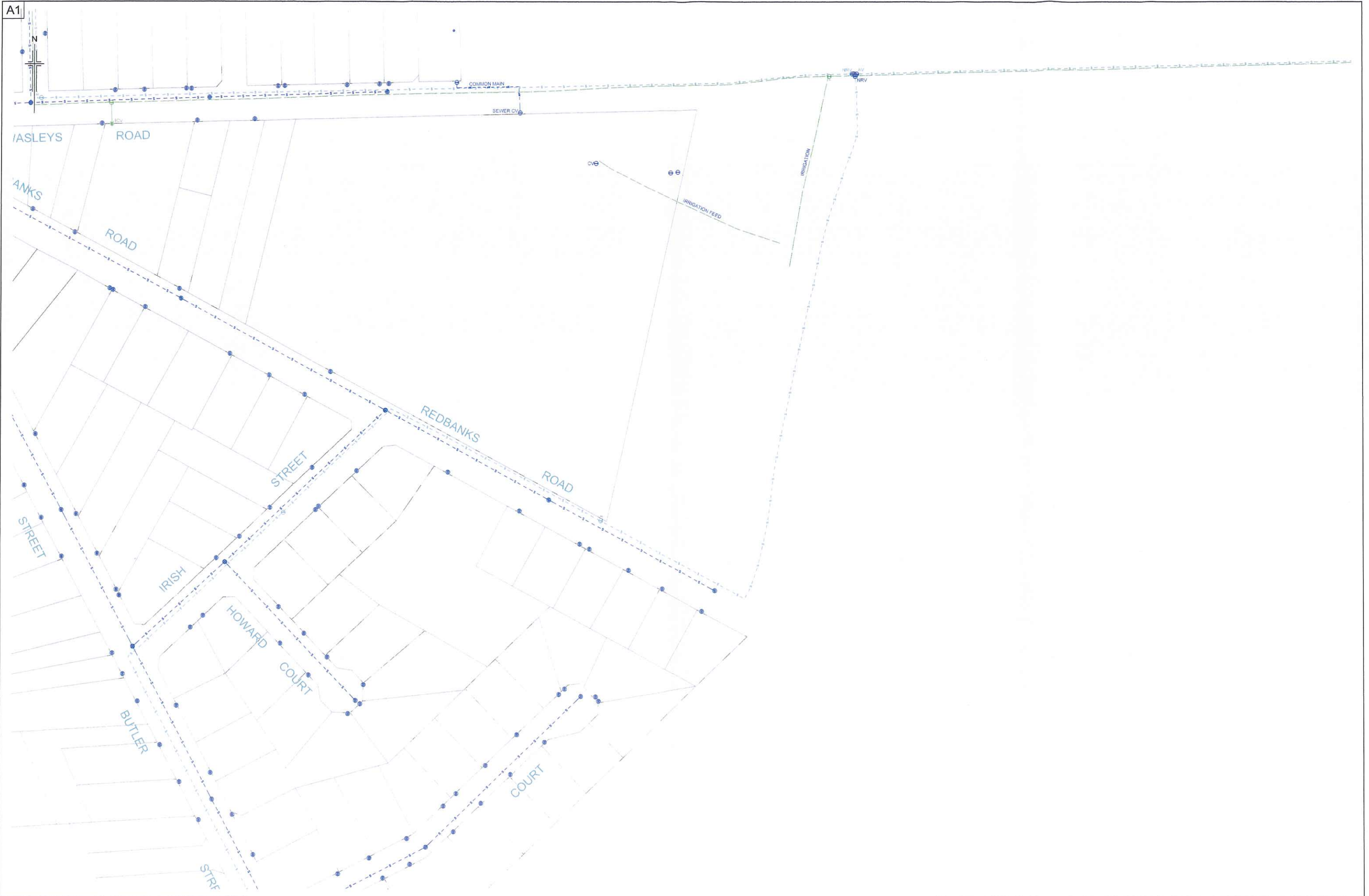








A1



A1

